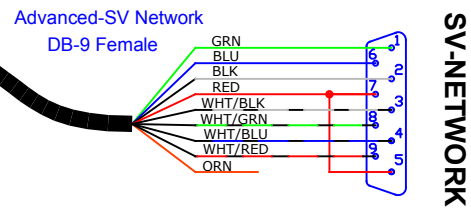
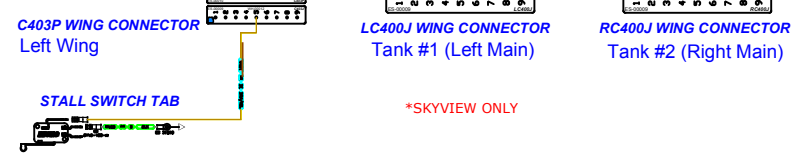
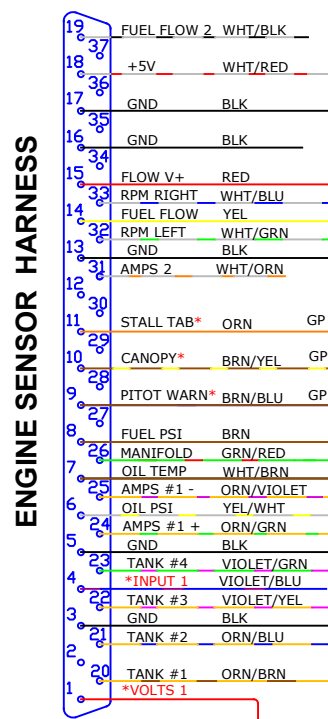
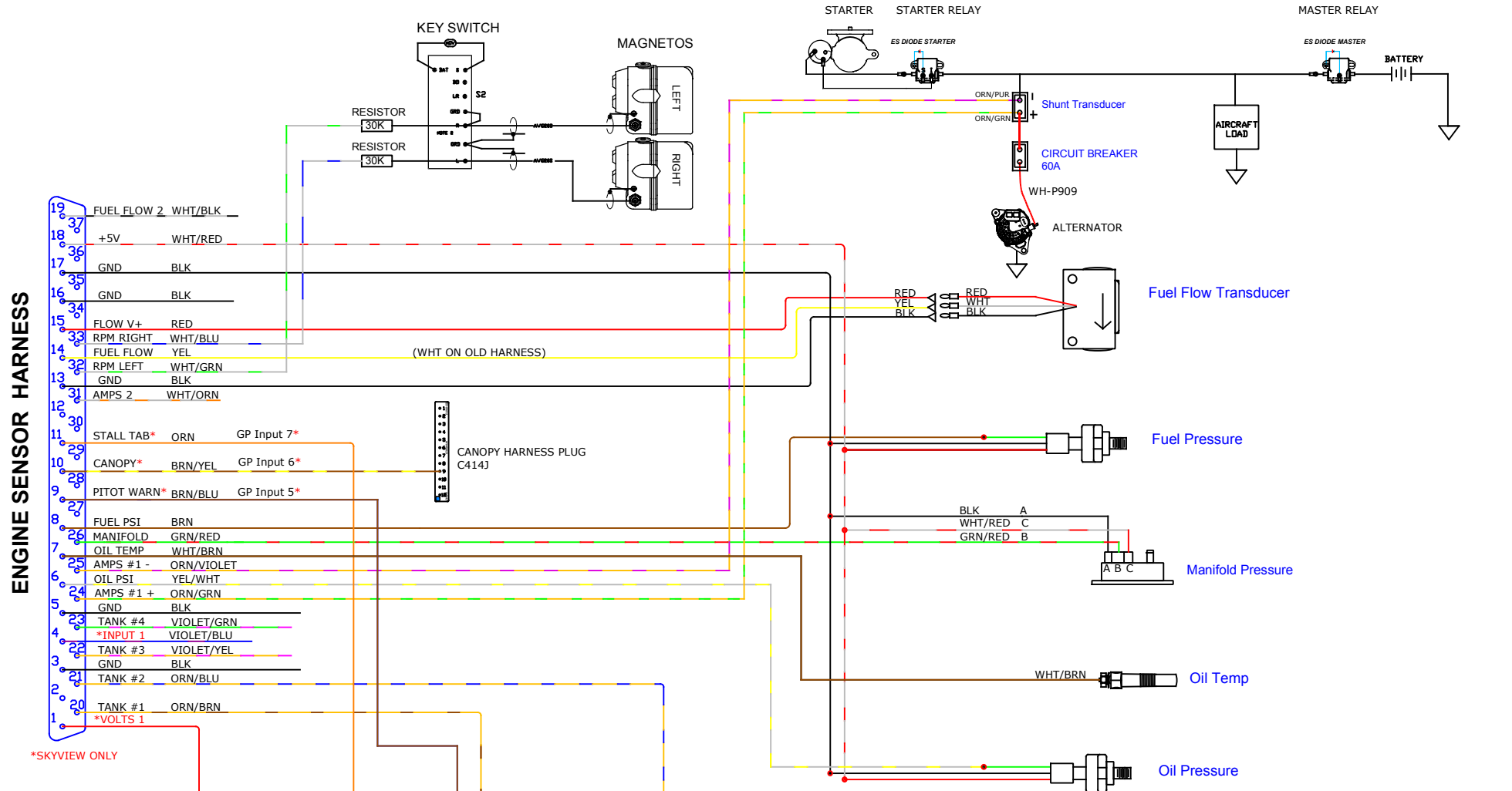
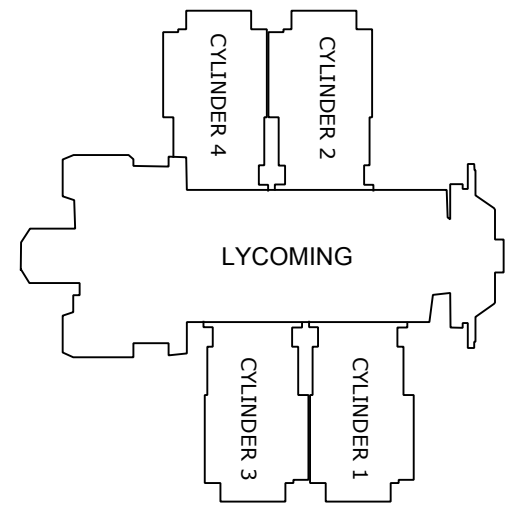
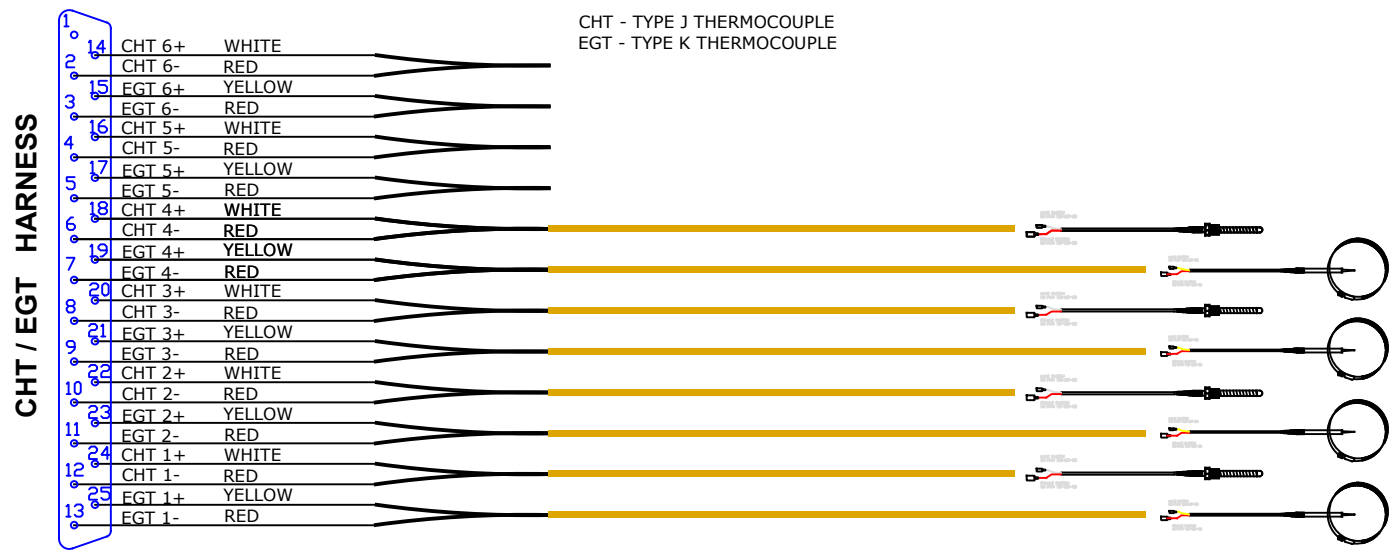
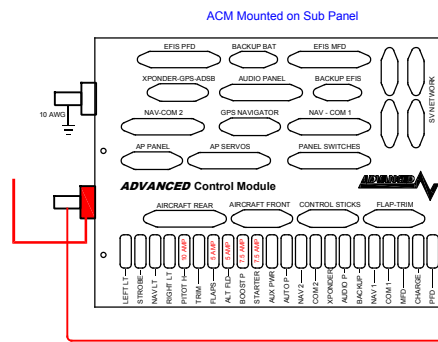


SV-EMS-220



***NOTE AF-5000 EFIS ONLY
PIN 5 MUST BE JUMPED TO PIN 7 TO
POWER THE FUEL FLOW TRANSDUCER**



REV	DATE	DESCRIPTION	REV BY	ITEM	QTY	PART #	DESCRIPTION
1	2/15/16	Updated Color Code	SR				
1	2/15/16	Initial Drawing	RJH				

DATE	2/15/16	SCALE	NONE
DRN	RJH	APPR	RJH

TITLE	Wiring Diagram	P/N	53914
	SV-EMS RV-14 Harness		B 8



This drawing is the property of Advanced Flight Systems Inc. and contains confidential information. It is not to be copied, reproduced or used without written approval.